

Systech International®
Innovating Packaging Execution Systems

Systech Blister

Systech Blister, an application of Systech Senti™, accommodates continuous and indexing blister machines from a single solution platform. The application enables color tablet and print quality inspection of blister-packaged products and associated blister lidding materials.

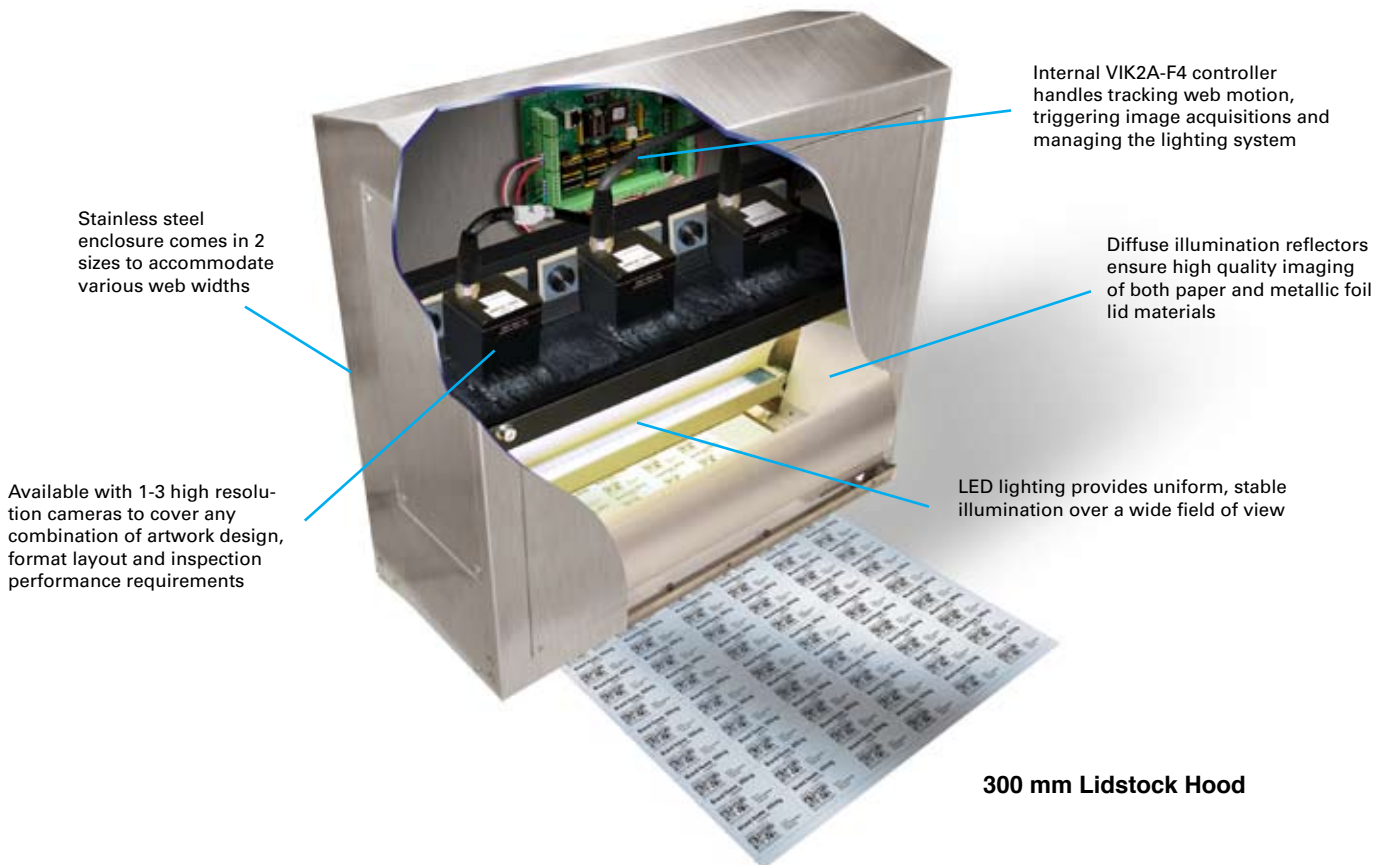
Systech Blister provides the ability to add cameras for additional inspections on the packaging line, such as carton inspection. The application also conducts any combination of tablet/blister color inspections including white-on-white, gray-on-gray, and low-contrast backgrounds. The Senti lidstock hood handles both paper and foil backing without any need for reconfiguration.

The application ensures the quality and correctness of the following:

- Individual tablets
- Capsules
- Soft gelatin capsules
- On-line and pre-printed lid stock information down to the unit-dose level

Key benefits include:

- Variety of color software modules, plus the ability to run monochrome & color vision tools together on the same image
- High color fidelity allows discrimination of colors that are only slightly dissimilar
- Advanced color tool creates statistical color variance based on nearby color extrapolation to accommodate normal process color variations, reducing false rejects
- High spatial resolution provides a high degree of tablet integrity assurance; errors in shape, chips or particles are all detected



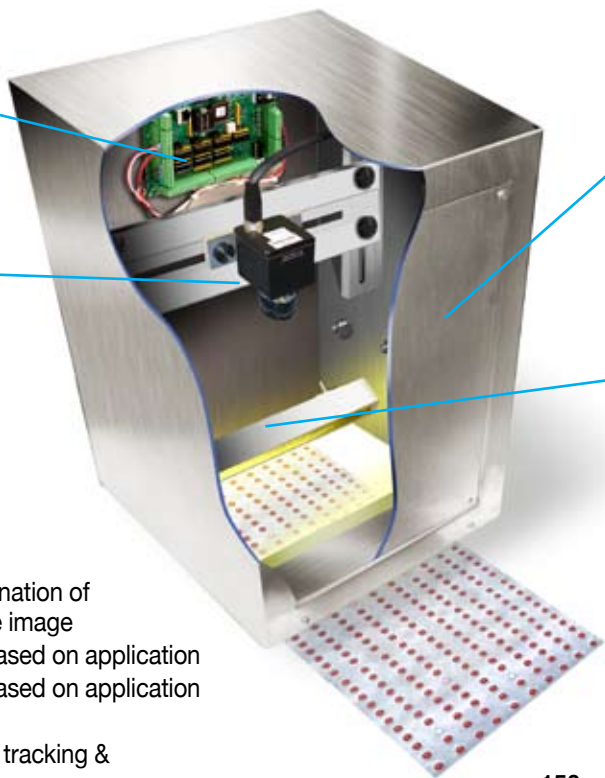
300 mm Lidstock Hood

Internal VIK2A-F4 controller handles tracking web motion, triggering image acquisitions and managing the lighting system

Available with 1-3 high resolution cameras to cover any combination of artwork design, format layout and inspection sensitivity requirements

Stainless steel enclosure comes in 2 sizes to accommodate various web widths

LED lighting provides uniform, stable illumination over a wide field of view



Blister Product Specifications

- Supports an unlimited combination of inspection tools from a single image
- Up to 3 cameras (300 mm) based on application
- Up to 2 cameras (150 mm) based on application
- Web speeds up to 1.1 m/sec
- “Bolt-on” self contained web tracking & image triggering system

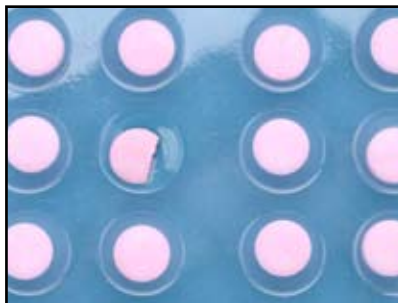
150 mm Blister Hood

Blister Inspections

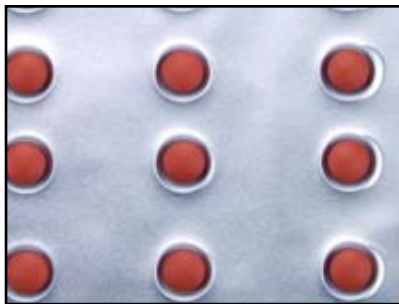
Tablet - Missing



Tablet - Broken



Tablet - Wrong Color



Metallic Foil



Lidstock



RSS

European Headquarters
 Belgium
 Pontbeekstraat 2
 1702 Groot-Bijgaarden
 Tel: +32 2 467 03 30
 Fax: +32 2 467 03 31



Offices Located in: US • Belgium • UK

US Headquarters
 2540 US Highway 130 Suite 128
 Cranbury, NJ 08512 USA
 Tel: +1.609.395.8400
 Toll Free: +1.800.847.7123
 Fax: +1.609.395.0064